

FOLKLANDS

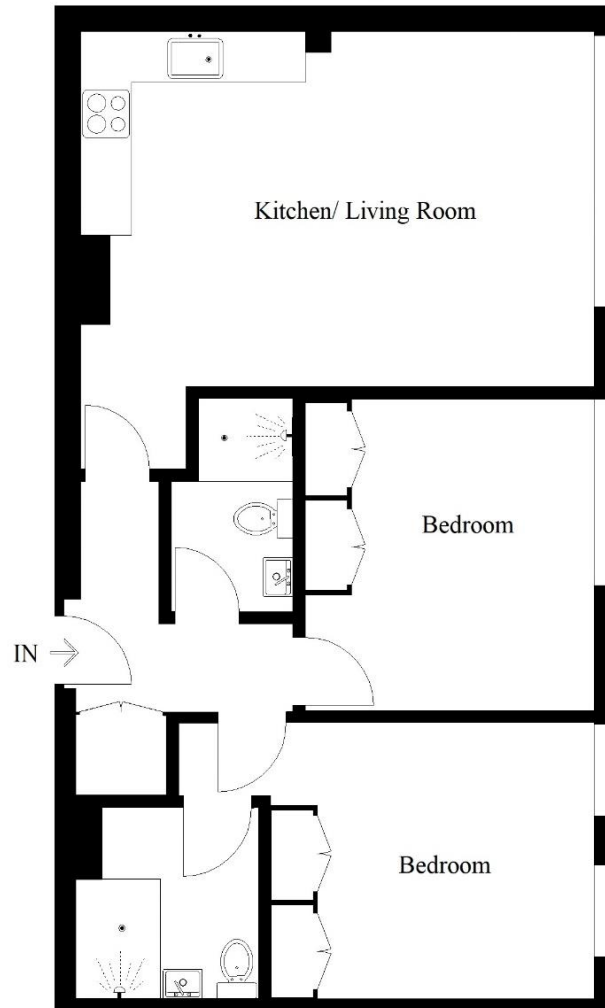
THE QUARTERS, CENTRAL CROYDON
MONTHLY RENTAL OF £1,300





The Quarters, Central Croydon

Approximate Gross Internal Area
67 sq m / 722 sq ft



11th Floor

Illustration for identification purposes only,
measurements are approximate, not to scale.
FloorplansUsketch.com © 2018 (ID 409649)

INFO@FOLKLANDS.COM - 020 8686 0002

362 BRIGHTON ROAD - SOUTH CROYDON - CR2 6AL

- ❖ EPC EER C
- ❖ UNFURNISHED
- ❖ AVAILABLE IMMEDIATELY
- ❖ HIGHLY CONVENIENT LOCATION
- ❖ 5 MINUTES WALK TO EAST CROYDON TRAIN STATION
- ❖ CONCIERGE SERVICE
- ❖ 11TH FLOOR WITH VIEWS OVER CENTRAL CROYDON
- ❖ STYLISH OPEN PLAN LIVING
- ❖ EN-SUITE SHOWER ROOM TO MASTER
- ❖ PARKING AVAILABLE AT AN ADDITIONAL COST



**** Available Immediately **** A stylish apartment situated on the 11th floor of this prestigious central Croydon apartment block, conveniently located only five minutes walk away from both West & East Croydon train stations and a plethora of local shops and supermarkets.

Offered as unfurnished, this spacious apartment enjoys an elevated position within the building, a concierge service, in-house maintenance, lift access, and high levels of security.

The accommodation comprises master bedroom with built in wardrobes & en-suite shower room, a further double bedroom with built in wardrobes, a separate shower room, ample storage space, and a sizeable open plan lounge/ kitchen with fitted appliances.

In our opinion this property would make a wonderful home, and feel that an early appointment to view will prove essential to avoid disappointment.

